

# Svg Express Services Pvt Ltd.



SVG Express Services Pvt Ltd.

## An Overview

Dinesh Kumar Choudhary  
SVG Express Services Pvt Ltd-  
C-114 -F , Road No 08, VKI Area, Jaipur.  
**+91-9829355548**  
[www.svgjpr.com](http://www.svgjpr.com)

# Agenda

---

Sl. No.	Highlights
1	Who We Are
2	What We Do
3	Our Value Proposition
4	Key Enablers
5	Awards and Accolades
6	Our Brand and Values
7	Our Patrons



SVG Express Services Pvt Ltd.

# Who We Are

Introduction



# SVG Today...



## ***Activities :-***

Rural BPO's (Telecalling, Data Entry & Scanning)  
E2E Document Management  
Skill Development Projects  
Logistics  
Contact Point Verification (CPV)

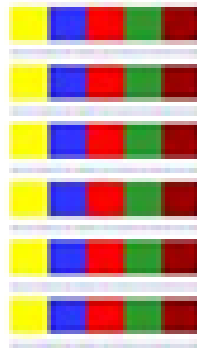


# Our NATIONAL Presence & Revenue Breakup

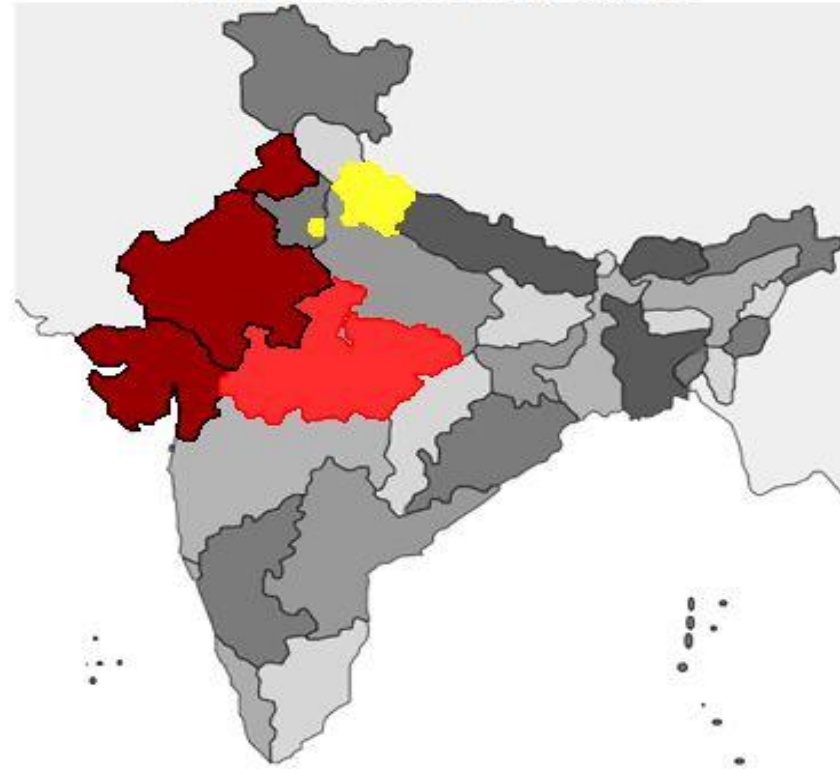
## NATIONAL Delivery Centers, BPO and Sales Offices

6 of 33 states

Delhi  
Gujarat  
Madhya Pradesh  
Punjab  
Rajasthan  
Uttarakhand



### SVG Presence At a Glance



**49.8%** Rajasthan

**29.4%** Madhya Pradesh

**8.6%** Uttarakhand

**12.2%** Gujarat



SVG Express Services Pvt Ltd.

## What We Do



# Strategic Business Units and Service Lines

## Industry Verticals

**RURAL  
BPO**



**Skill  
Development**



**Telecom &  
Banking  
Document  
Management**



**Logistics &  
Transportation**



**Staffing &  
Manpower  
Solutions**



**Sales &  
Distribution**



RURAL BPO

Skill Development

E2E Document Management

Logistics & Transportation

Sales & Distribution

Address Verification

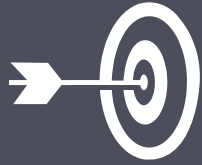
Digitization Services

Staffing & Manpower Solutions

Service Lines



# Business Process Outsourcing (RURAL)



Value  
Delivered

1

- Enhance Business Alignment
- Drive Transformation
- Focus on “Value Creation”
- Measure Success

Across all aspects of our operations.



Back Office  
Transformation

2

- Driving process optimization.....  
..... standardization and automation through  
Base)))™ – An integrated suite of BPO tools



Innovating the  
Front Office

3

- One view across interfaces
- Analytics led process transformation
- Self Service solutions



रोजगारपरक कौशल प्रशिक्षण कार्यक्रम (E.L.S.T.P)

नाम करण सिंह  
उम्र १९  
जिला जयपुर  
प्रशिक्षण प्रदाता SVG Express Services  
वर्तमान पद असलुटेंट  
नियोजक नोबिन्द इंटर्प्राइजेज  
वेतन १२६००  
योजना का नाम ELSTP



लाभार्थी का अनुभव  
मैंने SVG एक्सप्रेस प्राइवेट लिमिटेड कोटपुली  
ब्रांच से एकाइंटर्स अडिस्ट्रेट उडिन टैली का कोर्स  
किया था। कोर्स के बाद मैंने नोबिन्द इंटर्प्राइजेज  
आदित्य बिरला को सीमेंट प्लांट में नोबिन्द  
इंटर्प्राइजेज के रोल पर हो गया जहाँ मैं  
RSLDC के साथ साथ SVG एक्सप्रेस  
को हार्दिक धन्यवाद देता हूँ।

Rajasthan Skill and Livelihoods Development Corporation (RSLDC)

[www.livelihoods.rajasthan.gov.in](http://www.livelihoods.rajasthan.gov.in)

RSLDC Head Office: J-8-A, EMI Campus, Jhalana Institutional Area,  
Jhalana Doongari, Jaipur (302004) or at your nearest District Office of RSLDC





# Rural BPO- Telecalling



# Rural BPO DATA Entry & Scanning





# Our Skill Training Centers

- Currently we are working in State of Rajasthan with RSLDC ELSTP Project & MP with DDU Project.





SVG Express Services Pvt Ltd.

# Our Value Proposition

Do Business Better





# Our Promise



**Readiness -- Lead time to start**

**1 – 4 Days**

**Turn Around Time  
( According to SOW)**

**We offer 1-4 Hours TAT as per SOW**

**IT Strength**

**We Have In -House IT Team For  
Software Implementation**

**VTM Submission Compliance**

**Assured 99.99%**

**Cost Effectiveness**

**Having Cost effective , quality & Trained  
Resources**

# Technology Platform

- **Customized software**  
( Fulfills End-to-end CAF management process, compliance requirements, reporting, AVS, Logistics, Storage management, tracking and retrieval ).
- **Auto MIS On Hourly Basis Or As per Need.**
- **Ensures compliance requirements as per VTM / TERM guidelines**
- **Electronic reporting, tracking and Retrieval of scanned CAFs as well as physical CAFs from storage vaults**
- **Reports : -**
  - Distributors wise Activation report
  - Monthly, Weekly Activation report
  - Audit Performance Report.
  - Operator performance Report
  - Highly Customizable reports based on business rules changes



# Abstract

**We are ready to start services within a 1 week lead-time**

**Our Document processing solution has been acknowledged the best in Rajasthan  
By Leading Clients As **IDEA, AIRCEL, MTS & TTL.****

**We have a unique capability to offer both on-ground logistics and  
technology platform, with several proven operating models**

**Extensible solution**

**Ability to meet your SLAs and willing to take targets of customer satisfaction**

**99.99 % level TERM / VTM compliance**

**We provide continuous innovation and R&D support for all our projects**







SVG Express Services Pvt Ltd.

# Key Enablers



# Our Key Enablers

## Collaborating with customers to 'Do Business Better'



### Differentiated Client Engagement

Differentiation at the Front through industry and client insight



### Deep Industry Insights

Uncovering key characteristics of industries and offering unique solutions



### Standardization of Delivery

Delivery models targeting faster, efficient and business aligned KPI's



### Innovation Network

Engage, retain, develop for enabling transformation. Investment in next gen technologies



### Strategic Partnerships

360 deg relationship; Collaborative offerings and innovation with product partners



### Culture

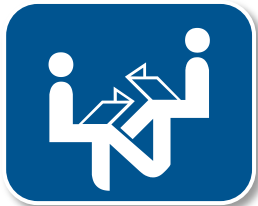
Collaboration with customers; employees; partners and community

# Differentiated Client Engagement

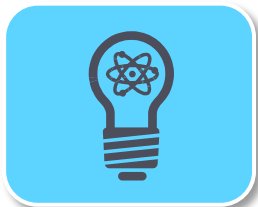
## Differentiation at the Front



» Deep Industry Focus  
Advanced Technology Focus

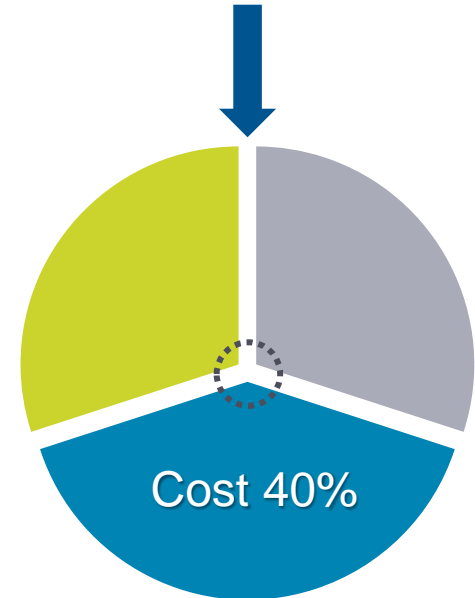


» Integrated Consulting  
Capability



» Client Centric System

Increase **Value**  
**Delivered** impacting  
**Revenue & Customer**  
to **60%**





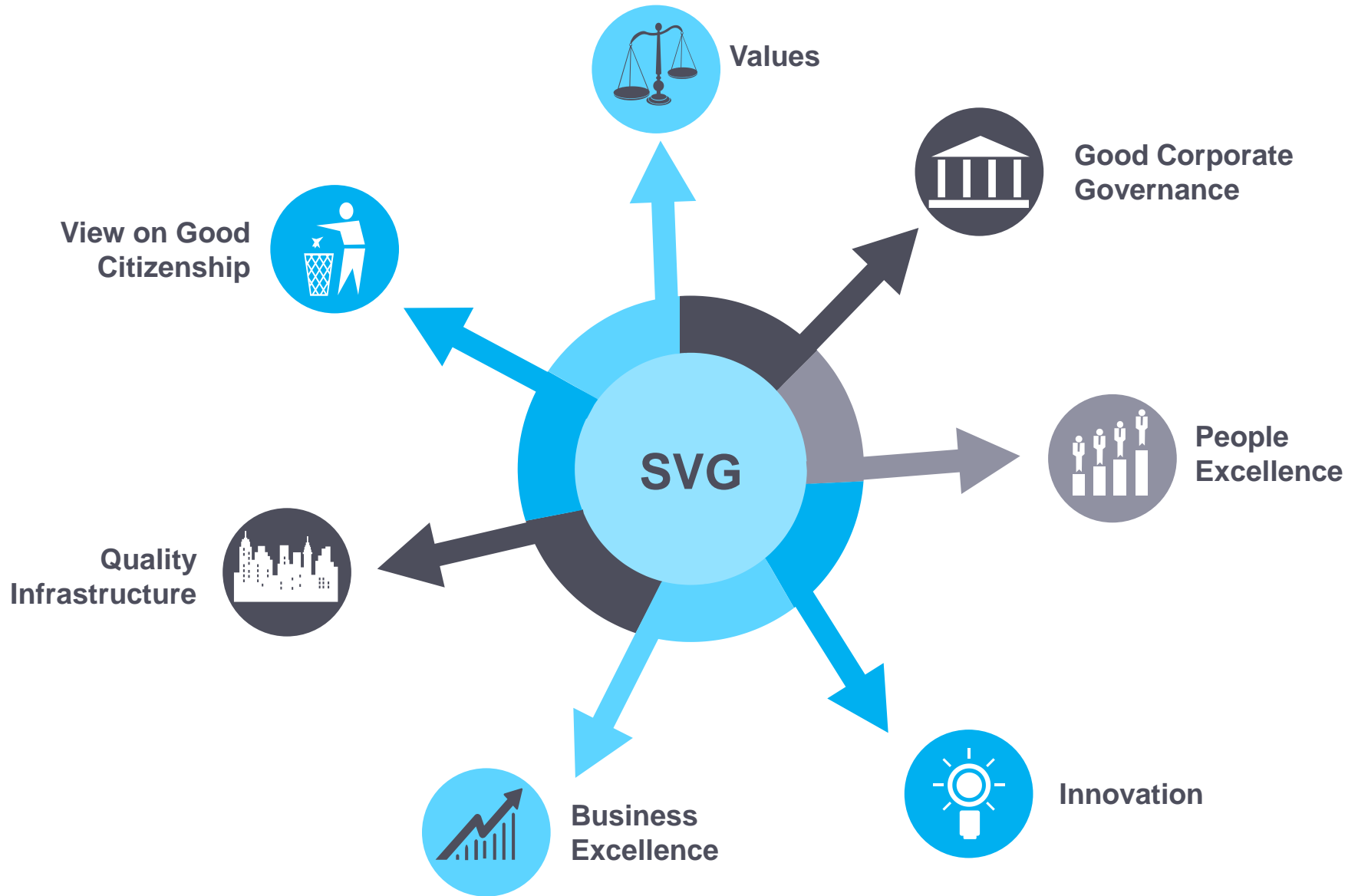
SVG Express Services Pvt Ltd.

# SVG Brand and Values

Values | Vision | Brand | Innovation | Good Citizenship



# Brand SVG



# Our Patrons

## Telecom & Logistic



## Government



PAN CARD CENTER



प्रधानमंत्री कौशल विकास योजना  
PRADHAN MANTRI KAUSHAL VIKAS YOJANA



अनेक सरकारी नौकरीयो मे एक आवश्यक योग्यता

## Banking



State Bank of India



## Distribution & Other Products

# HITACHI



# Why Choose Us

A hand is shown placing a single blue pill among a large number of white pills on a light blue surface. The background of the slide features a blue geometric pattern.

**Cost Effectiveness** ☒

**Timely Delivery** ☒

**Reliability** ☒

**Digitization** ☒

**Long Experience** ☒

**Reach in Deep Rural** ☒

## Thank You